



Uninsulated aluminium roof profiles with external structures

Enjoy the open air feeling. Special slim aluminium profiles create an elegant, light filled room. The weather-resistant profiles with external structures can be used to realise large-format roof structures. Flexible glazing elements expand your glass canopy into a protected glass house. So whatever the weather you can relax in a Solarlux glass house.

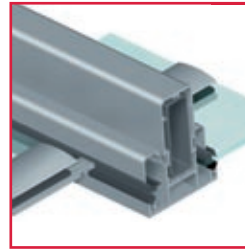
56702-020-900 / 072010 / Subject to technical changes



GLASS CANOPY
SDL Ambition

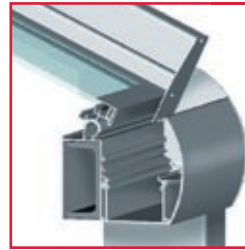


Advantages



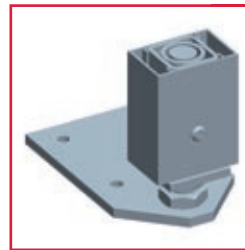
Rafter

- | Controlled drainage in glass panel joint due to 11 mm height offset between the rafter and glazing bar
- | No penetration of drainage layers due to glazing bar connections into the rafter
- | Maximum impermeability



Concealed downpipe/gutter

- | Elegant aluminium faced downpipe
- | Harmonious gutter design with improved appearance
- | Large distances between posts due to concealed steel reinforcement



Corner post with base

- | Adjustable base console - tolerance variation 60 - 170 mm



Lighting

- | No drilling in rafter necessary
- | Lights and transformers are integrated into special lighting sections and clipped under the rafters

Technical data



Section technology:

- | Uninsulated roofing system
- | Roof pitches from 5° to 45° possible
- | Adaptation to roof pitch through positioning of joint section
- | Easy, quick installation of the wall bracket
- | No additional mullions or seals necessary on the inside of the roof structure
- | Large water carrying capacity of gutter and downpipes
- | Steel reinforcement of rafters and eaves
- | Ventilation-high quality skylights or electric roof fans with automated controls

Glazing:

- | Single glazing from 8 to 12 mm and double glazing from 26 to 28 mm with 4-sided structural glazing possible
- | The True Divided Light (TDL) glazing sash bar is form-fitted to the rafter
- | Controlled, cascade-like drainage of entire roofing system

Surface:

- | Powder coating to RAL colours

Vertical elements:

- | Preferred vertical elements: SL 25, SL 25R, SL 35, SL 45